

Dangerous dogs

V/Line will not permit dangerous dogs (full breed and half breeds) on any of its train services. Dangerous dogs are defined under the Domestic Animals Act 1994 under Restricted Breeds. 'Restricted breed' dogs are defined as those dogs prohibited from being imported by the Commonwealth Customs (Prohibited Imports) Regulations 1956, including the Dogo Argentino, the Japanese Tosa, the Fila Brasileiro, the Perro de Presa Canario (or Presa Canario) and the American Pit Bull Terrier (or Pit Bull Terrier).

Refusal of travel

In addition, V/Line staff may refuse carriage as a result of an animal that causes a disturbance, presents or becomes savage and may risk harm to itself, its owner, other passengers and staff on board the train service. On services where seating availability and space is limited, staff may request passenger and animal to board an alternative service.

Further information

Further information about the carriage of domesticated animals including dogs and cats can be found on our website at www.vline.com.au or via **136 196**.



V/Line Pty Ltd
ABN 29 087 425 269
GPO Box 5343
Melbourne VIC 3001

All information correct at time of printing July 2011.

Taking your pet on a V/Line train



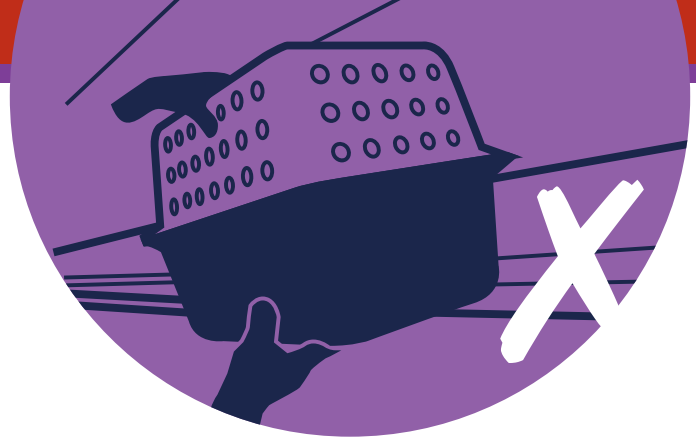
Passengers are welcome to take domesticated animals (including cats and dogs) on a V/Line train as long as they follow the conditions set out in this brochure which ensures the safety and welfare of everyone onboard.

Guide dogs, hearing guide dogs, guide dogs in training and approved assistance animals are permitted on all V/Line services and there are no conditions around the carriage of these animals travelling with us.

Please ask our train conductors and coach drivers if you need assistance if travelling with an assistance animal.

If you wish to travel with your pet, you must observe the following conditions:

- Pets are not permitted on V/Line coaches
- All domesticated pets, including cats and dogs, must be carried in an approved animal container that meets the following guidelines:
 - **Small** – equivalent to one unit of baggage
 - **Suitable for cats and small dogs**
 - up to a small terrier size
 - **Size** – 56cm long / 30cm wide / 38cm high
 - **Maximum weight** (including pet) – up to 15kg
- Provided the RSPCA guidelines are met with the animal being able to stand up straight, lie down without being cramped and turn around within the approved container, carriage of more than one animal is permitted
- Small animals in approved containers can be carried on the following train configurations in the designated locations provided:
 - **Loco - Hauled Services** – in the luggage van (not allowed within passenger cabin)
 - **VLocity fleet** – inside the passenger cabin within the designated bike/luggage storage area
 - **Sprinters** – inside the passenger cabin within the designated luggage storage area (known as the corral)
- All small animals carried in an approved container are the responsibility and under supervision of the owner. Owners are required to place the animal container on and off the V/Line train



- All small animals carried in an approved container are to be stored in designated luggage areas and cannot be stored in walkways, under seats, in overhead luggage racks or on seats
- Owners are responsible for the removal and clean-up of any excrement and/or mess that the animal may produce on their journey
- It is recommended you travel in off-peak periods
- V/Line staff will take no responsibility for the storage and carriage of small animals
- Only one approved container per adult ticket.

You can NOT travel with your animal if:

- The container is not sufficiently sturdy or is in disrepair and the animal is likely to escape
- The container or animal is unclean
- The animal appears diseased
- The animal is savage or aggressive or creates undue disturbance
- The container could cause injury or suffering to the animal and/or passenger and staff
- The container fails to meet the RSPCA regulations that the animal must be able to:
 - Stand up straight;
 - Lie down without being cramped;
 - Turn around within the container.

